

全国免费服务热线
Toll free national hotline

400-9903-678

上下有限，服务无限

SPACE IS LIMITED , UNLIMITED SERVICE

格尔森电梯有限公司

GERSON ELEVATOR CO.,LTD

地址：浙江省湖州市南浔区南浔镇兴园路355号

Add: No.355 Xingyuan Road, Nanxun Town, Huzhou City, Zhejiang Province,China.

电话(Tel)：0572-2900712

传真(Fax)：0572-2923993

网址(Web)：www.gersonlift.com

中国平安 格尔森电梯产品由中国平安财产保险股份有限公司承保
PING AN 24小时报案热线：95511

本书为一般信息类出版物，我们保留随时更改产品设计和说明的权利。
本书的任何字句，无论其字面意思或含义，对于任何产品及产品的用途和质量，或者任何购销合同条款的表述与更改均不承担任何责任。
由于印刷工艺的限制，实际加工的颜色可能与本册略有不同之处，最终造型可根据实际材料和色样决定。

It is an ordinary information publication. We keep the right of alter the product design and description at any time.
If there is any dispute out of the literal meaning of any product description, use or quality, the description and alteration of any sales contract, our company will not bear any responsibilities there-from.
Because of the restriction of the printing technology if there is any slight difference between the actually machining color and that from this pamphlet, please take the actual material and color sample as the criterion.

 **ES ELEVATOR**



GERSON ELEVATOR CO.,LTD

格尔森电梯有限公司

乘客系列电梯 
PASSENGER SERIES ELEVATOR



中德合资



ISO 9001




3C认证标志



格尔森电梯 精品制造专家

GERSON ELEVATOR Manufacture specialist of superior elevators & escalators

 中德合资·德国索伦堡公司
China-germany A joint venture-suolun burg gmbh

中方：格尔森电梯有限公司


德方：德国Suolun Burg GmbH公司

格尔森电梯有限公司与德国·索伦堡公司合资共同创立的高端电梯品牌。公司依托合资优势，引进德国丰富的管理经验及先进的生产理念，共同研发、制造具有德国工业品质的电、扶梯产品，为城市的垂直交通缔造完美客流解决方案。格尔森电梯一直专注于电梯设备与产品的开发与制造，为电梯产业提供配套产品，帮助客户实现价值最大化。公司推行智能化、人性化、工业化及高新技术化，让格尔森电梯成为行业内备受客户信赖、员工骄傲、社会认可和合作伙伴尊重的一家德系电梯品牌公司。

GERSON is a high-end elevator brand jointly established by Gerson Elevator Co.,LTD and Germany. Solenburg co.

With the advantages in the joint venture company, the introduction of Germany rich management experience and advanced production concept, common research and development,manufacture with German industrial electricity, escalator products, make perfect for urban vertical transportation passenger flow solutions.

GERSON elevator has been focused on the development and manufacture of elevator equipment and products, providing supporting products for the elevator industry to help customers realize the maximization of value. The company pursues intelligent, humane, industrialized and high-tech, so that the GERSON elevator inator industry has become a customer trust, employee pride, social recognition and partner respect of a German elevator Brand Company.

德系风范·奢享生活 
German style · Enjoy life



国际格爾森 创新引领者

INTERNATIONAL GERSON INNOVATIVE FORERUNNER

德国·索伦堡公司进入中国，在中国浙江南浔合资成立了格爾森电梯有限公司，并设立亚太总部和研发中心，成为一家集研发、设计、制造、销售、安装、维护为一体的专业化综合性电梯制造企业。

公司产品涵盖小（无）机房乘客电梯、观光电梯、医用电梯、别墅电梯、载货电梯、无机房载货电梯、汽车电梯、杂物电梯、自动扶梯、自动人行道等系列产品。

“追求卓越科技、为客户打造至美电梯乘坐空间”是格爾森电梯素来坚持的价值理念，融德国先进的控制技术于电梯系统内、依托优秀的研发团队、在技术上不断突破，实现了技术转移和整机品质提升，本着“用心选材、精心制造、以人为本、科学管理、注重研发、严把质量”关的总体思路下，以行动落实用户权益，为全球客户量身定制专属产品，最大程度满足的多样化需求。

Suolun burg gmbh entered into China, and established GERSON Elevator Co.,Ltd. in nanxun Zhejiang China. Asian-Pacific headquarter and research and development center set.

Company's products cover a small (not) machine room passenger elevator, sightseeing elevator, medical elevator, villa elevator, cargo elevator, machine roomless freight elevator, car elevator, sundries elevators, escalators, automatic sidewalks, etc. Series of products.

"Pursuit of excellence in science and technology, and build for the customer to the GERSON elevator ride space" is the elevator always adhere to the value of philosophy, Germany advanced control technology in the elevator system, relying on excellent research and development team, constantly breakthroughs in technology, for technology transfer and overall quality, in line with "carefully select material, elaborate manufacture, people-oriented, scientific management, pay attention to research and development, strict quality" have closed, under the general idea of action to carry out the rights and interests of users, tailored exclusive products for global customers, maximize meet the diverse needs of customers.

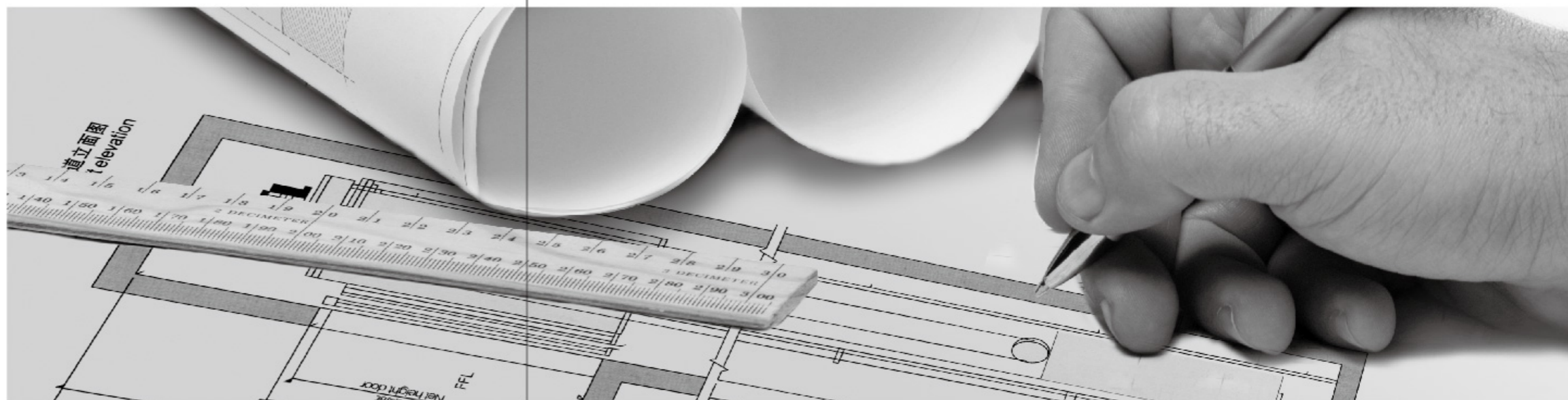
精湛技术 国际理念

THE INTERNATIONAL CONCEPT OF EXQUISITE TECHNOLOGY



先进技术

Advanced Technology



成熟可靠的串行通讯

The matured and reliable serial communication

各控制子系统间采用简洁可靠的串行通讯网络，实现召唤、指令、群控信号、楼层显示等一系列功能，极大降低了因线路问题引起故障的可能性，大幅度提高电梯运行的可靠性，同时使电梯系统维保更简便。

The concise and reliable serial communication network is adopted between various control sub-systems in order to fulfill a series of the functions such as calling, command, group supervision signal, floor display etc. It greatly reduces the trouble possibilities out of circuit problem, largely enhances the reliability of the elevator travel. At the same time, it brings more convenient repair and maintenance to the lift system.

全数字化控制，实现精确、舒适的乘梯享受

Fully digital control fulfills the accurate and comfortable travel enjoyment

应用国际依靠的空间电压适当控制的变压变频(VVVF)驱动技术，显著提高了电压利用率，最大限度消除电流谐波和转矩脉动，有效抑制了振动及噪音。

运用国际依靠的智能化功率模块，使电梯的控制与电机的控制实现了“无缝集成”。专用驱动系统使电梯更加快捷、精确、可靠，同时模块化的设计结构大大降低了故障率。

集成32位CPU、32位高速数字信号处理器的数据网络控制系统，实现精确的数字化控制与电机驱动。采用源于高档汽车的总线通讯技术，保证了电梯信息传输的高可靠性和高精度。

International relies on the application of space-the amount of control of variable-pressure variable frequency(VVVF)drives, significantly improve the utilization ratio of the voltage, the most current and torque ripple resonant waves, effectively suppressing the vibration and noise.

Using international relies on the intelligent power module, so that the elevator control and motor control to achieve a "seamlessly integrate". Special drive system brings the lifts faster and more accurate, reliable and modular design greatly reduce the failure rate.

Integrated 32-bit CPU, 32-bit data network control system of high speed digital signal processor, precise digital control and motor-driven. Bus communication technology derived from premium to ensure elevator high reliability and accuracy of the information transmitted.



永磁同步无齿轮曳引机

The permanent magnet synchronous gearless traction machine



选用稀土材料，将同轴传动技术、数字变频技术和群组电脑组合控制技术充分融合，高效节能，运行成本最小，热量散失低，工作效率极高，与一般传统技术相比，可节省能源40%之多。而且无齿轮曳引机无需更换油脂，无油渍污染，低噪音设计，为您营造宁静的乘坐空间。

It chooses the rare earth materials to fully merge the coaxial drive technology, the numeric variable frequency technology, the group-computer combined control technology with the efficient energy saving minimum running cost, low heat dissipation, extremely high work efficiency. Compared with the common traditional techniques, it can save more than 40% of the energy. And the gearless traction machine needs no renewal of the grease without any oil stain pollution. The low noise design produces a peaceful riding space for you.



VVVF变频器控制一体化控制器

Vector-based intelligent integrated controller

格尔森变频控制一体化控制器是集计算机技术，自动控制技术，网络通讯技术，电机矢量驱动技术于一体的智能控制系统，具有国际先进水平。

GERSON integrated controller combining the elevator control with the VVVF inverter. It is a advanced system including computer technology, automatic control technology, network communication technology, and motor vector drive technology.

VVVF变频异步门机系统

Top advanced door operator system



格尔森电梯将先进的VVVF变频异步门运用到电梯门机系统，确保梯门流畅和宁静开关。有自学习能力的门负载检测器更提高了梯门开关的灵敏度，监控每个楼层梯门负载的变化，自动调整每楼层最适合的开关速度以确保安全可靠。

GERSON elevator applies the advanced VVVF variable voltage and variable frequency control technology to the elevator door operator system so as to ensure the smooth elevator door and quiet switch. What is more, the self-learning door load detector increases the sensitivity of the elevator door switching on/off. It monitors the variation of elevator door load on every floor. Automatically rectifying the most appropriate open/shut speed in every floor so as to guarantee the security and reliability.

小机房乘客电梯

Small Machine Room Elevator



以小见大，开创节能新纪元

Small Machine Room opens up a big space, it Initiates upon a new energy-saving epoch

格尔森系列小机房乘客电梯，在继承了现代高度成熟的技术的基础上，提升了电梯系统的可靠性与灵活性，实现了真正的环保与节能的优势。

格尔森系列小机房乘客电梯与通常的有机房相比，采用合理的土建布局，使得机房面积达到与井道一样大，节省了机房空间，同时减少了机房对建筑特有的外观影响，可以适应对外观有特殊建筑要求的建筑物，不仅降低了建筑成本，同时更有助于激发建筑设计师的灵感，创造出幢幢雄伟的艺术品。

On the basis of inheriting the modern highly mature technology, GERSON small machine room elevator elevates the reliability and flexibility of the lift system and fulfills the genuine environmental protection and energy-saving advantage.

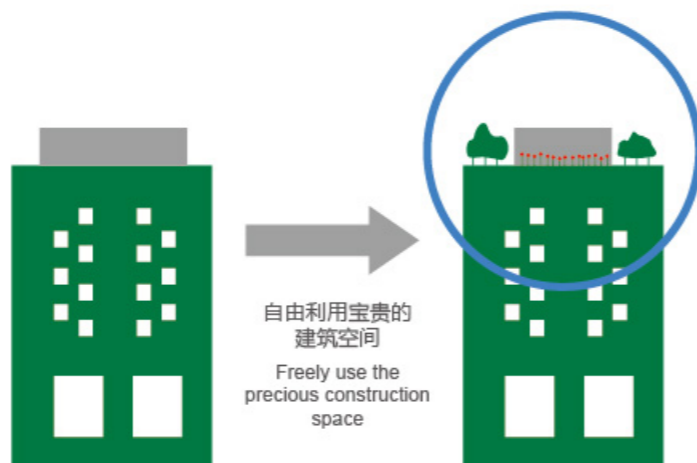
Compared with the usual machine room, GERSON small machine room elevator adopts the reasonable civil engineering layout, the machine room covers the equal area as that of the well. It saves the machine room space, reduces the outline influence from the machine towards the construction. It can adapt to the buildings which has special requirements towards the outline appearance. It not only cuts down the construction cost, but also is helpful to excite the inspiration of the construction designers to create the artistic buildings one after another.

大大节省空间

Greatly saving the space

紧凑的永磁同步无齿轮主机可为机房留出更大的空间。从建筑顶部吊装设备进行安装时，这种轻便的主机所需的起重机设施相对于传统的机房装备要小得多。它甚至可以直接从井道中进行吊装。

The compact permanent magnetic gearwheel free main unit can reserve larger space for the machine room. During installation, this small main unit requires much lighter hoisting equipment as compared by the one required by the traditional units. It can even be directly hoisted through the hoist-way for installation.



紧凑高效，稳定可靠

Compact and efficient, Stable and reliable

格尔森系列小机房电梯，采用合理的土建布局，使机房面积达到与井道一致，节省了机房空间，同时减少了机房对建筑特有的外观影响，可以适应对外观有特殊建筑要求的建筑物。

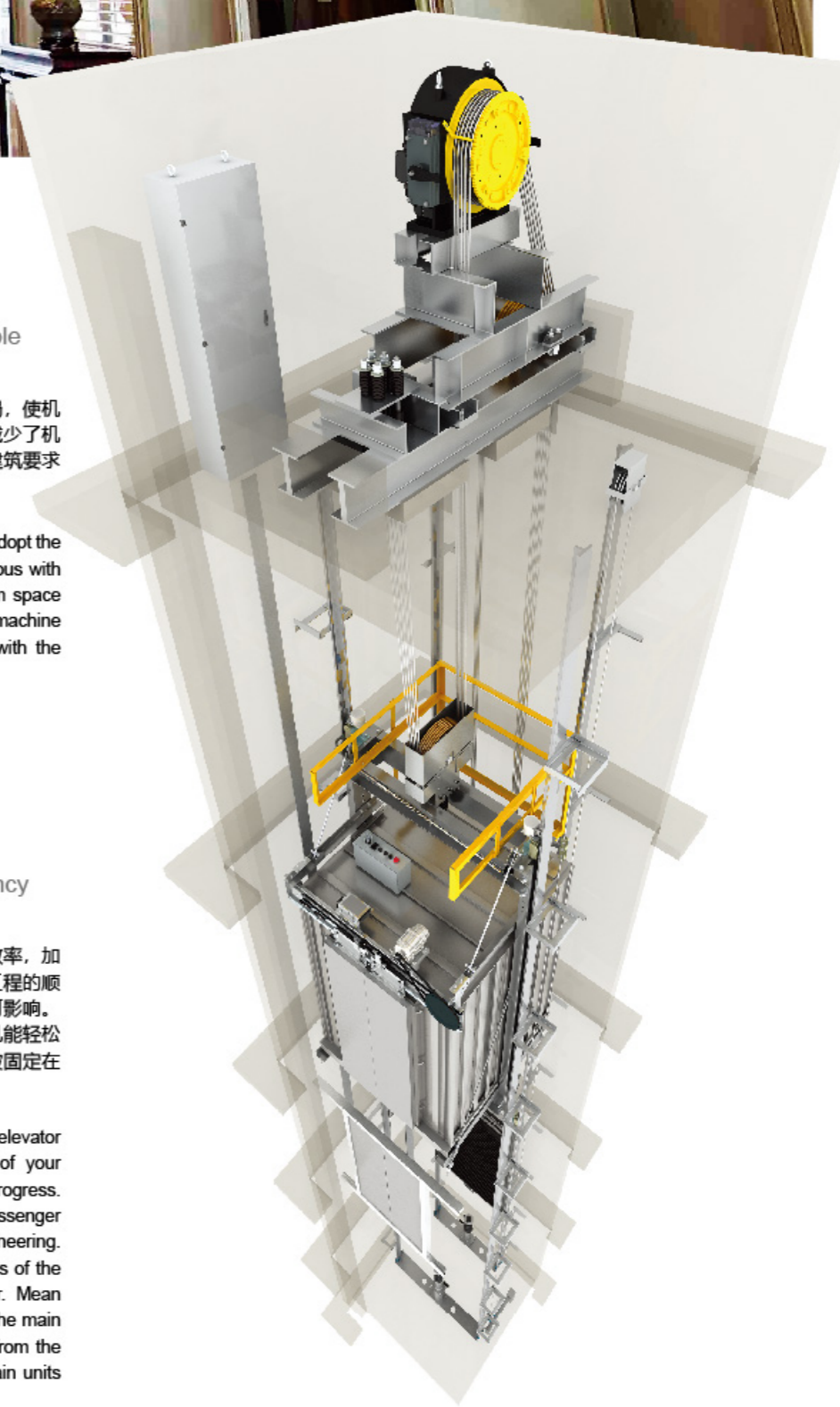
GERSON serial small machine room elevators adopt the reasonable construction layout. The well is harmonious with the machine room area. It saves the machine room space and reduces the peculiar outline influence from the machine room to the construction. It can suit the building with the special architectural outlook requirements.

便捷安装，提高效率

Convenient installation, improve efficiency

格尔森小机房乘客电梯技术帮助您提高工程效率，加快施工进度。使用格尔森小机房电梯能保证建筑工程的顺畅运行，不会因为电梯安装而给工程进度带来任何影响。同时当需要更新建造时，格尔森小机房电梯的主机能轻松的从机房中搬出，方便的替换，而传统主机则是被固定在机房中。

GERSON small machine room passenger elevator technology helps you to increase the efficiency of your engineering and accelerate the speed of project progress. The use of GERSON small machine room passenger elevator can ensure smooth operation of the engineering. Therefore, no affects will be brought to the progress of the engineering due to the installation of the elevator. Meanwhile, When it is necessary to make any upgrades the main unit of GERSON elevator can be easily taken out from the machine room and replaced while the traditional main units are permanently installed inside the machine room.



小机房电梯示意图
Small machine room elevator conceptual diagram

无机房乘客电梯

Machine Roomless Elevator



以“无”胜“有”，为建筑提供无限可能

The performance of machine roomless elevator is better than the elevator which have machine room, It provides the building with an infinite possibility.

格尔森系列无机房电梯产品深谙环保理念，节能降耗，节约建筑面积，提高设计自由度，能充分体现绿色人文。与同等载重级别的有机房电梯相比，节约电能40%，节约建筑面积10%。格尔森突破了传统电梯必须设置机房的前提，为现代建筑有限空间提供了无限的创造可能。格尔森无机房电梯特别适用于载重1000KG及以下，运行速度2.5m/s及以下的电梯。

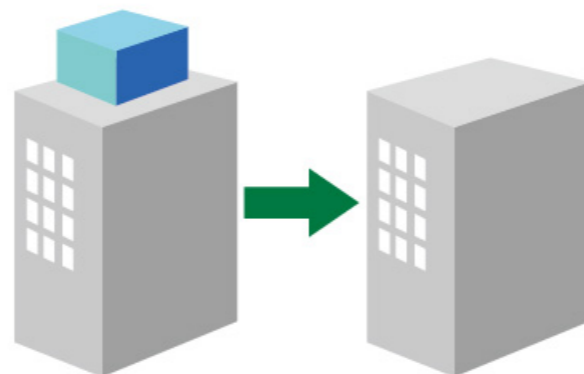
GERSON serial machine roomless elevator is a kind of environmental protection, energy safety, building space saving, freestyle product. Comparing with the same loading capacity machine room, it can saving 40% energy, reducing 10% building space. GERSON has done a break through on the precondition that elevator should be equipped with machine room, offering a limitless creativity in the limit building room, GERSON none machine room elevator usually used in the condition that loading weight below 1000KG, running speed below 2.5m/s.

节约建筑成本

Saving the costs for construction

格尔森无机房电梯占据更少空间，使您更有效地利用建筑空间。它能节约建筑时间、材料和成本。将机房与井道融为一体的设计，高效率的安装工作，保证不会因为电梯安装而给工程带来任何影响。

GERSON machine roomless elevator take less space, which enables you to effectively utilize the construction space. They save the construction time, materials and costs. The combined design of machine room together with the hoist-way and highly effective installation ensures affect freeness to the engineering caused by the installation of elevators.



取消机房，可以自由地设计井道位置，能够灵活有效地应用顶上原先安置机房的空间。

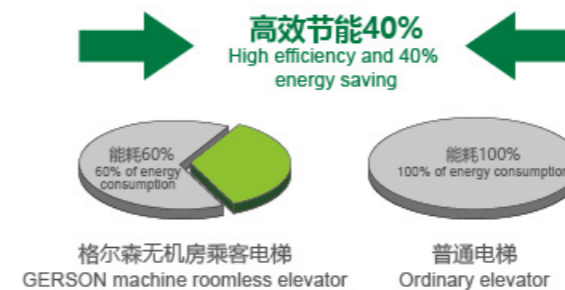
We cancel the machine room to freely design the shaft position. We can flexibly and effectively apply the top space that is preset for machine room.

减少40%的电梯能耗

Saving up to 40% energy

采用全球领先的永磁同步无齿轮曳引机，有效减少能耗，可以减少能耗40%之多，实现电梯主机免维护。

A global leader in permanent magnetic synchronous gearless traction machine, effectively reduce the energy consumption, can reduce energy consumption 40%, the realization of elevator mainframe maintenance free.



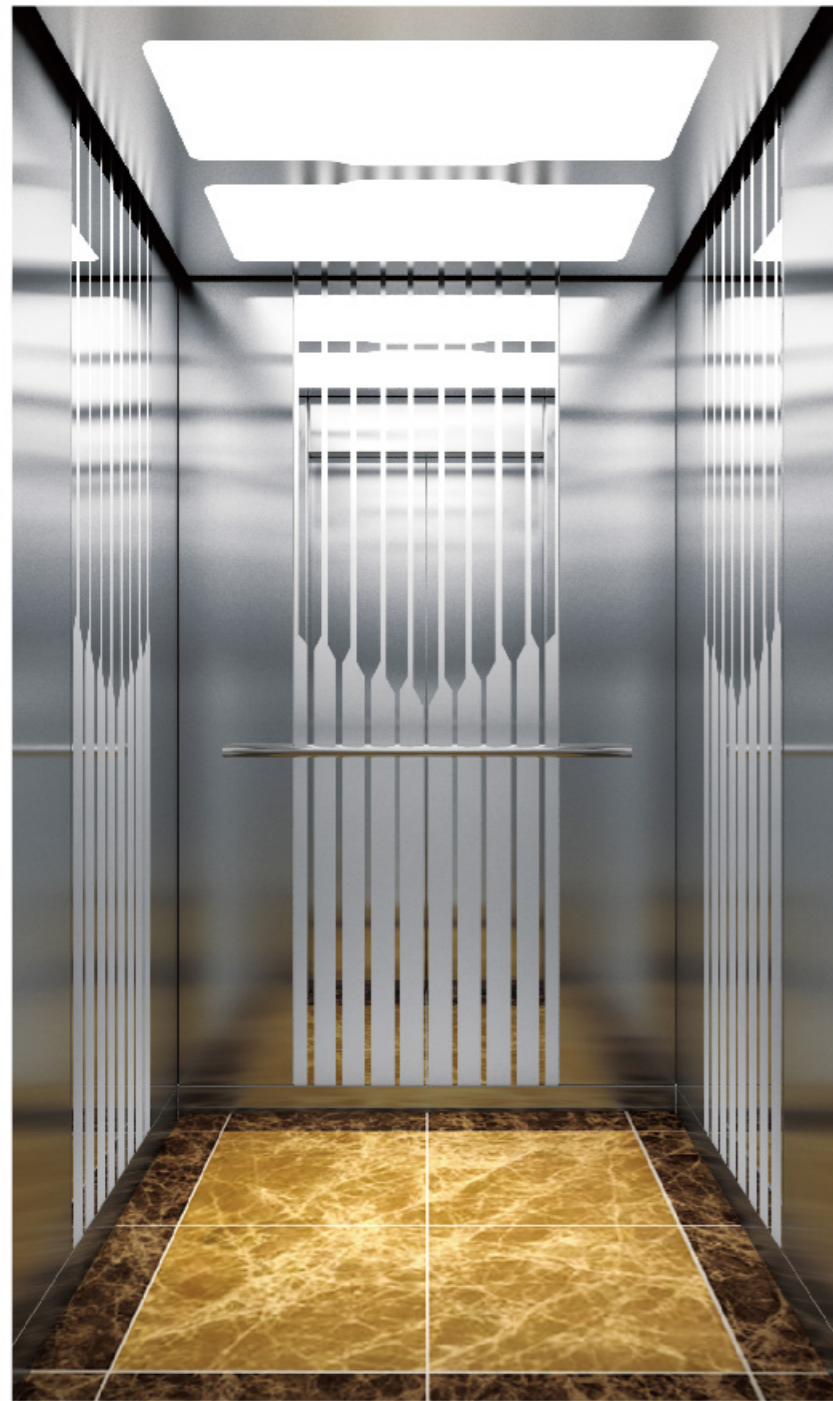
无机房电梯示意图
Machine-roomless elevators
conceptual diagram

乘客电梯标准配置

Passenger elevator standard configuration

唯美的吊顶灯饰，极致的现代感，明快通透的光源缔造出宁静祥和的氛围。美观大方富于创新意味，且易于维护。

The aesthetic ceiling lamp decoration is endowed with rich contemporary sense. The bright and light-emitting illuminant brings about a peaceful and auspicious atmosphere. The elegant and attractive outline appears quite innovative. It is easy to maintain as well.

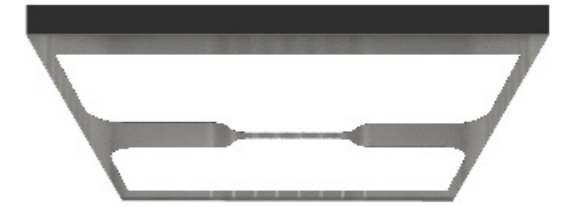


GES-K001 标配 Standard

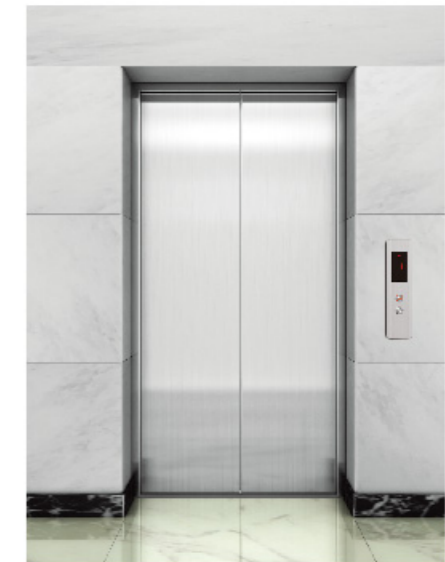
吊顶：发纹不锈钢框架，亚克力透光板
轿壁：发纹蚀刻不锈钢，镜面蚀刻不锈钢
地板：大理石砖

Ceiling: Textured stainless steel frame, acrylic transparent
Car wall: Hairline stainless steel, mirror etched stainless steel
Floor: Marble tiles

风格千变，配置随心
Changeable styles, free configurations



GES-D02



GES-M01

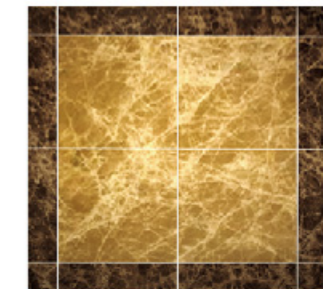
厅门及小门套材质：首层发纹不锈钢、其余层钢板喷涂
Landing door and small door pockets material: first floor hairline stainless steel spray the remaining layers



GES-ZW01



GES-CZ01
一体式
(标配 standard)



GES-DB001
地板：大理石砖
Floor: Marble tiles

可选配置

Optional configuration

风格多变，配置随心
Changeable styles, free configurations



GES-K002

标配 Standard

吊顶：覆膜钢板配亚克力透光板，筒灯
轿壁：覆膜钢板，镜面蚀刻不锈钢
扶手：不锈钢单管
地板：大理石砖

Celling:Laminated steel plate with acrylic transparent platedownlight
Car wall:Coated steel sheet, mirror etching stainless steel
Handrail:Stainless steel single pipe
Floor:Marble tiles



GES-K003

标配 Standard

吊顶：发纹不锈钢，亚克力灯饰
轿壁：镜面蚀刻不锈钢，发纹不锈钢
扶手：不锈钢单管
地板：大理石砖

Celling:Hairline stainless steel, acrylic lamp decoration
Car wall:Mirror etching stainless steel, hairline stainless steel
Handrail:Stainless steel single pipe
Floor:Marble tiles



GES-K004

标配 Standard

吊顶：发纹不锈钢，亚克力灯饰
轿壁：覆膜钢板，镜面蚀刻不锈钢
扶手：实木扶手
地板：大理石砖

Celling: Hairline stainless steel, acrylic lamp decoration
Car wall: Coated steel sheet, mirror etching stainless steel
Handrail: Real wood armrest
Floor: Marble tiles



GES-K005

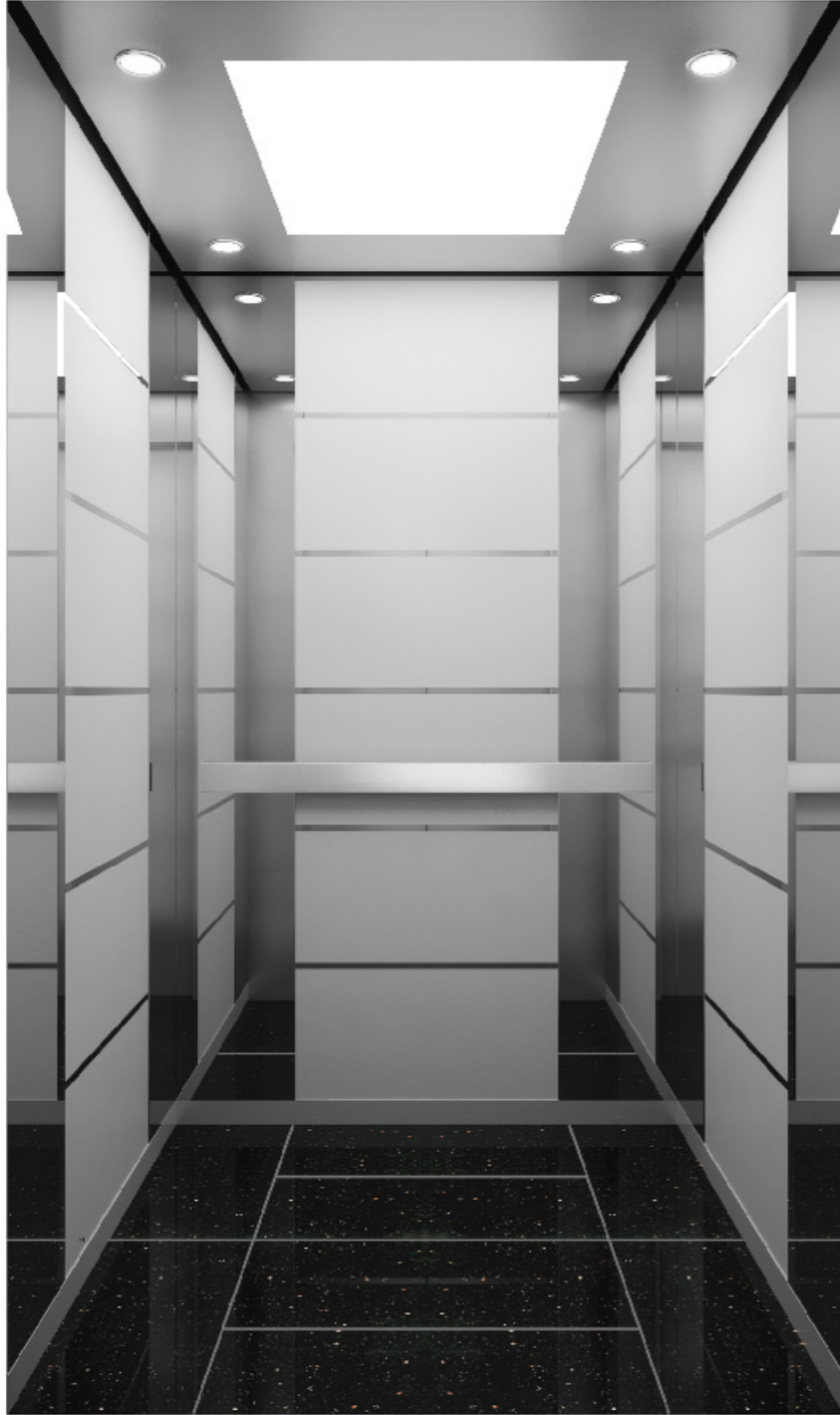
标配 Standard

吊顶：镜面不锈钢，拱形亚克力，LED灯
轿壁：镜面蚀刻不锈钢，镜面不锈钢，发纹不锈钢
扶手：不锈钢扁扶手
地板：大理石砖

Celling: Mirror stainless steel, Arch acrylic lighting, LED lighting
Car wall: Mirror etching stainless steel, mirror stainless steel, hairline stainless steel.
Handrail: Stainless steel flat handrail
Floor: Marble tiles

可选配置

Optional configuration



GES-K006

标配 Standard

吊顶：镜面不锈钢底板上辅以LED灯的柔光照明设计
轿壁：镜面不锈钢、横拉丝
扶手：不锈钢扁扶手
地板：大理石

Celling: Mirror stainless steel, LED lamp for soft illumination design
Car wall: Mirror stainless steel, wire drawing finishes, leather bags, art glass
Handrail: Stainless steel flat handrail
Floor: Marble

风格多变，配置随心
Changeable styles, free configurations

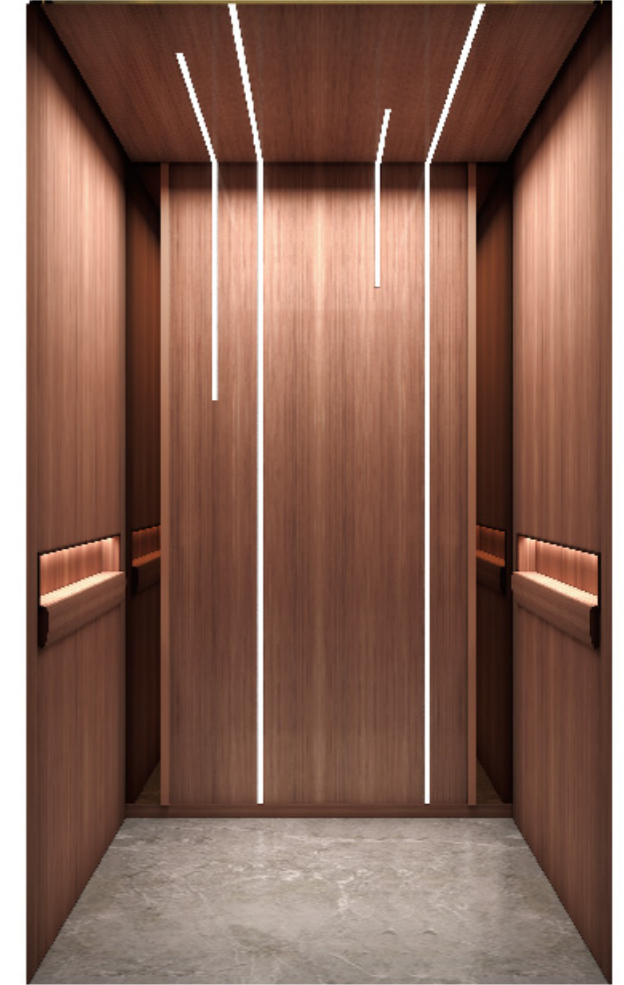


GES-K009

选配 Optional

吊顶：钛黑镜面不锈钢，内灯带
轿壁：钛黑镜面不锈钢，钛黑磨砂不锈钢
扶手：无
地板：大理石

Celling: Titanium black mirror stainless steel, acrylic lamp decoration
Car wall: Titanium black mirror stainless steel, titanium black frosted stainless steel
Handrail: None
Floor: Marble



GES-K010

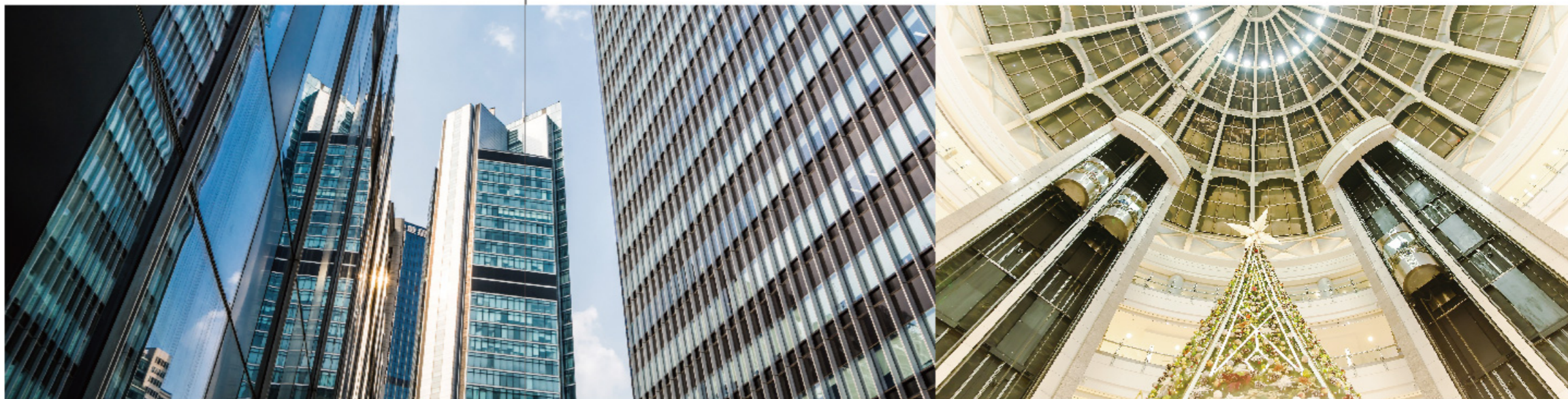
选配 Optional

吊顶：木饰，灯带
轿壁：木饰，亚克力灯条 后壁两边 古铜镜面
扶手：无
地板：大理石

Celling: Wood trim, light strip
Car wall: Wood decoration, acrylic lamp back wall on both sides of the bronze mirror
Handrail: None
Floor: Marble

观光电梯

Observation Elevator



动感提升 优雅随行

Enhance the dynamic elegant accompanying

构造新颖独特，外观造型精美，品位脱俗出众，全新舒适的格尔森观光电梯富丽堂皇，让您领略现代建筑的超凡魅力和豪华气派，以VVVF变频驱动的节能配置，承载一个企业对社会无声的责任，以沉稳舒适的乘坐体验、风格独特的时尚外观和人性化的界面设置，充分演绎出格尔森电梯对都市生活的深刻见解。

Construct novel and unique, beautiful appearance, superior quality and refined, the new comfortable GERSON magnificent sightseeing elevator, allowing you to enjoy the modern architecture of extraordinary charm and luxurious, the VVVF inverter-drive energy-saving configuration, carrying a silent corporate social responsibility to calm and comfortable ride experience, a unique fashion look and style of human interface settings, the full interpretation of the elevator for GERSON insights into urban life.



平稳启动，宁静运行

Smooth start, quiet running

格尔森观光电梯专用变频器是以先进技术的控制理论为基础，以人体工程学原理，设计启动、加速、制动曲线，达到最佳的舒适感，是真正的电流矢量控制变频驱动系统。

GERSON Observation elevator special inverter takes the control theory of the advanced technology as the foundation. The start, acceleration, brake curves are designed according to the ergonomic. Theory in order to get the finest coziness. It is a genuine current vector control variable frequency drive system.

远程监控，运筹帷幄

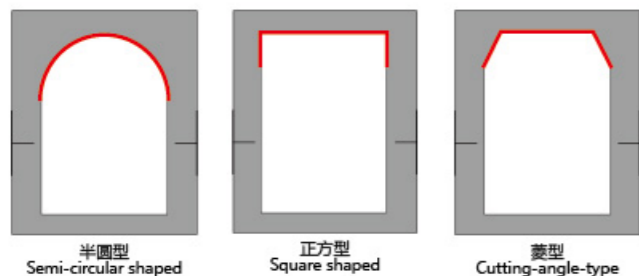
It plans the control by the long-distance monitor

通过有线或无线通讯模块，可实现防患于未然的远程监视系统，在远程监控中心对电梯运行状况和电梯内乘客情况进行实时监控，使故障在发生前就将故障排除，确保乘客安全。

① 电话网络接入方式。② 宽带网络接入方式。③ 无线网络接入方式。

Remote monitor center implements a real-time monitor to the lift running conditions and passenger conditions in the lift through the wired or wireless communication module. The trouble can be removed even before happening. Prevention is better than cure. In this way, the passengers' safety can be guaranteed.

① Telephone network access method. ② Broadband network access method. ③ Wireless internet access method.



半圆型
Semi-circular shaped

正方形
Square shaped

菱型
Cutting-angle-type



观光电梯轿厢装潢

Observation Elevator Decoration



GES-G001 标配 Standard

外 罩: 钢板喷涂加装饰灯带
吊 顶: 拱形吊顶, LED灯
观光壁: 安全夹胶玻璃
轿 壁: 发纹不锈钢
扶 手: 不锈钢管
地 板: PVC地板

Outhood: Steel plate spraying decoration lights
Ceiling: Vaulted ceiling, LED lights
Observation : Laminated glass
Car wall: Hairline stainless steel
Handrail: Stainless steel pipe
Floor: PVC flooring



GES-G002 标配 Standard

外 罩: 钢板喷漆
吊 顶: 钢板喷漆, 亚克力透光及LED灯照明
观光壁: 圆形6+6夹胶安全玻璃 (3块)
轿 壁: 发纹不锈钢
扶 手: $\varphi 25$ 不锈钢双管
地 板: PVC地板

Outhood: Painted steel
Ceiling: Steel paint, Acrylic light and the LED lighting
Observation : circular 6+6 safety glass (3 pieces)
Car wall: Hairline stainless steel
Handrail: $\varphi 25$ stainless steel double-barreled
Floor: PVC flooring

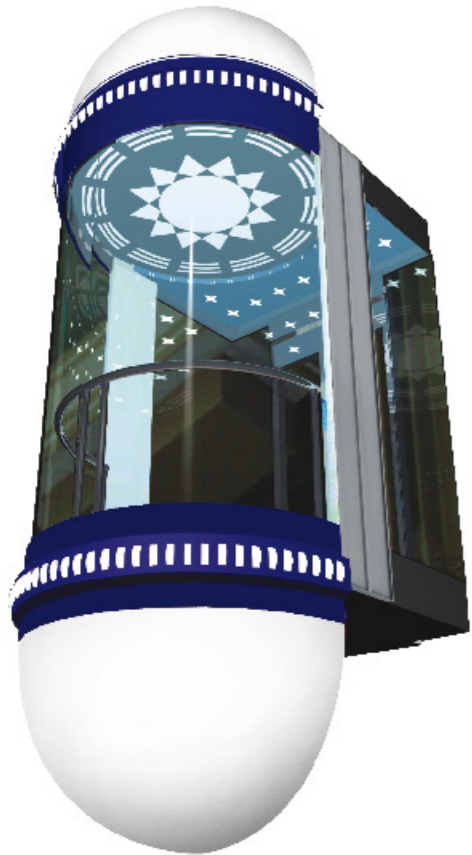


观光电梯轿厢装潢

Observation Elevator Decoration

都市气息，靓丽风景

Urban flavor, charm scene



GES-G003 选配 Optional

外 罩：钢板烤漆，上下带弧形围坎
吊 顶：钢板烤漆，亚克力灯饰
观光壁：夹层玻璃
轿 壁：夹层玻璃
扶 手：φ38不锈钢管
地 板：PVC地板（可选大理石）

Outhood: Steel plate baking varnish, with curved coaming on top and bottom
Ceiling: Steel plate baking varnish, acrylic decorative lighting
Observation: Laminated glass
Car wall: Laminated glass
Handrail: φ38 stainless steel pipe
Floor: Blue PVC flooring (optional marble)



GES-G004 选配 Optional

外 罩：发纹不锈钢，亚克力
吊 顶：发纹不锈钢，亚克力灯饰
观光壁：夹胶安全玻璃
轿 壁：发纹不锈钢
扶 手：不锈钢圆管
地 板：PVC地板（可选大理石）

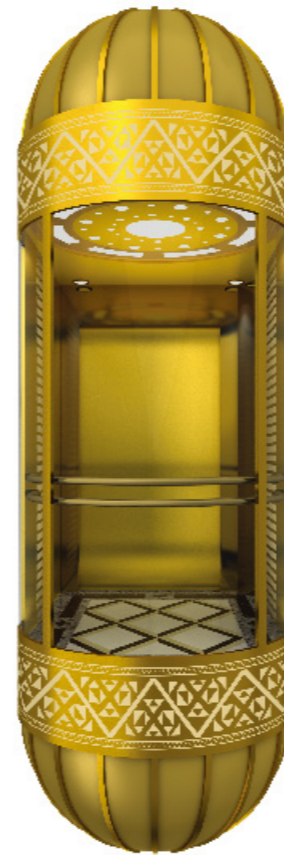
Outhood: Hairline stainless steel, acrylic
Ceiling: Hairline stainless steel, acrylic decorative lighting
Observation: Glue glass of safety clamp
Car wall: Laminated glass
Handrail: Stainless steel round tube
Floor: PVC flooring (optional marble)



GES-G005 选配 Optional

外 罩：发纹不锈钢，配亚克力灯饰
吊 顶：钢板烤漆框架，亚克力拱顶板，中间LED灯点缀
观光壁：安全夹胶玻璃
轿 壁：发纹不锈钢
扶 手：不锈钢管
地 板：PVC地板（可选大理石）

Outhood: Hairline stainless steel, acrylic lighting decoration
Ceiling: Steel frame of the lacquer that bake, acrylic dome roof, LED lamp ornament in the middle
Observation: Glue glass of safety clamp
Car wall: Hairline stainless steel
Handrail: Stainless steel pipe
Floor: PVC flooring (optional marble)



GES-G006 选配 Optional

外 罩：钛金，亚克力圆罩
吊 顶：钢板烤漆，亚克力灯饰
观光壁：圆形6+6夹胶安全玻璃（3块）
轿 壁：发纹不锈钢
扶 手：钛金不锈钢管
地 板：PVC地板（可选大理石）

Outhood: Titanium, acrylic round cover
Ceiling: Paint plate, acrylic lighting embedded bar acrylic lighting
Observation: Circular 6+6 safety glass(3pieces)
Car wall: Titanium metal etching, titanium mirror
Handrail: Titanium stainless steel tube
Floor: PVC flooring (optional marble)



GES-G007 选配 Optional

外 罩：钢板烤漆，灯饰
吊 顶：钢板烤漆，亚克力顶板，水晶灯柱
观光壁：圆形6+6夹胶安全玻璃（3块）
轿 壁：发纹不锈钢
扶 手：φ38不锈钢管
地 板：PVC地板（可选大理石）

Outhood: Steel plate of the lacquer that bake, lamp act the role ofing
Ceiling: Steel plate of the lacquer that bake, acrylic roof crystal lamp
Observation: Round 6+6 laminated safety glass(3pieces)
Car wall: Hairline stainless steel
Handrail: φ38 stainless steel pipe
Floor: PVC flooring (optional marble)



GES-G008 选配 Optional

外 罩：钛金镜面不锈钢，亚克力
吊 顶：镜面不锈钢框架，亚克力LED照明
观光壁：夹胶安全玻璃
轿 壁：钛金镜面不锈钢
扶 手：钛金不锈钢圆管
地 板：PVC地板（可选大理石）

Outhood: Titanium gold mirror stainless steel, acrylic
Ceiling: Mirror stainless steel framework, acrylic LED illumination
Observation: Glue glass of safety clamp
Car wall: Titanium gold mirror stainless steel
Handrail: Titanium gold stainless steel round tube
Floor: PVC flooring (optional marble)

医用电梯 Hospital Elevator 担架电梯 Stretcher Elevator



“医”诺千钧，通往健康的通道

“cure” thousand, lead to the healthy passage

格尔森系列医用电梯和担架电梯不仅用于运送乘客，还因使用的特殊而对电梯的功用性能有着特殊和严格的要求。格尔森医用电梯和担架电梯，能精确地控制电梯的运行速度，运行平稳、舒适。

格尔森医用电梯和担架电梯注重人性化的设计，来充分优化轿厢结构，最大限度地满足客户的使用要求。为乘客营造了一个宁静、淡雅的空间。

格尔森医用电梯和担架电梯以其独特的设计理念，创造与医院环境和谐统一，清洁明亮的空间，为乘客创造了一个舒适的环境，为病人更增添几分康复的信心。

GERSON series hospital bed and stretcher elevator not only used for carry passengers but also asked for high capability and demand. GERSON bed elevator and stretcher elevator can control the running speed accurately and placidly.

GERSON hospital elevator and stretcher elevator pay attention to human design, optimize the cab frame, and suffice passenger furthest. Build a quietly space for passenger.

GERSON hospital elevator and stretcher elevator make a harmonious and lightful space with it's special design, make patient super induce the belief of healing.

残疾人专用功能，平等运载，和谐空间

Special functions for the handicapped fulfill equal carrying in a harmonious space

格尔森医用电梯和担架电梯努力为大家创造平等的无障碍空间，将残障人士的需求纳入到电梯的设计理念中，除了在按钮上刻印盲文外，轿厢内的操纵箱采取横装方式，高度离轿底约一米出头，非常方便残障人士的使用，同时也不影响普通乘客使用。

GERSON hospital elevator and stretcher elevator efforts to create equality for all barrier-free space, the needs of people with disabilities into the elevator design, in addition to Braille engraving on the button, the button inside the car to cross loading tables means height above the car at the end of about one meter to succeed, people with disabilities is very easy to use, while not affecting the ordinary passengers.



GES-D001 标配 Standard

吊顶：发纹不锈钢框架，亚克力平板吊顶，四周LED照明

轿壁：发纹不锈钢

地板：大理石砖

Ceiling: Hairline stainless steel frame, acrylic flat ceiling, surrounded by LED lighting

Car wall: Hairline stainless steel

Floor: Marble tiles

别墅电梯

Villa Elevator



私家的艺术品质演绎 豪宅浮梦

The privately artistic quality fulfills your dream of a deluxe villa house

格尔森别墅电梯能让您尽情享受安逸。专用的变频系统精确控制电梯的运行状态，多方位提升舒适体验。噪音小，安装方便，成就您美妙的居家环境。格尔森电梯不仅节省了机房设计建造费用，更使您的建筑得到充分利用，占用面积小、无电梯井道、安全可靠这都是格尔森为您想到的。格尔森别墅电梯是复式和多层居家理想的实用又精致的电梯，也是老人、病人、残疾人居家最理想的上下层交通工具。

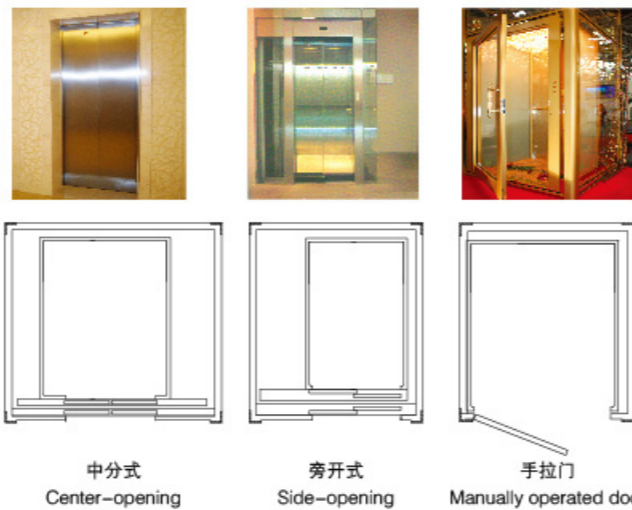
GERSON villa elevator can offer you a pleasant ambience, special inverter system control the running position, upgrading the comfort feeling all-sided. Low noise, easy installation, accomplish you perfect living condition. GERSON not only reduce the cost of designing and building on machine room, also make best use of your building room, also make best use of your building room. Small occupying space. No hoistway, safe and durable elevator is provided for you by GERSON. GERSON villa elevator is compact and economic elevator for the villa-like and multistoried buildings, and ideal lifting vehicle for old men, patient, and disabled people.

人性化的开门方式 满足您的需求

The humane door opening mode meets your require

格尔森别墅电梯，采用多种开门方式供用户选择，同时可根据用户的需求和使用情况专门设计。

We utilize the multiple door opening modes into GERSON villa elevator for the users' free choice. Meanwhile we can specially design the lifts according to the users' different requirements and conditions.



中分式
Center-opening

旁开式
Side-opening

手拉门
Manually operated door



人性化设计的五大优势

Five advantages of the human design

- 环保节能：220V或380V的电压，耗电量相当于一台冰箱
- 产品特点：可无土建井道，美观，舒适
- 驱动方式：曳引驱动和液压驱动两种
- 适用场所：不同风格，不同结构的别墅
- 风格外观：适合各种装修风格

• Environmental protection and energy-saving:
It uses 220V or 380V voltage. It's power consumption is equal to that of a refrigerator.

• The product features:
No construction well, it is attractive and comfortable.

• The applicable occasions:
Different styles and structures of the villas.

• Style outline:
It suits all kinds of the decoration styles.

• Drive mode:
Both traction drive and hydraulic drive.

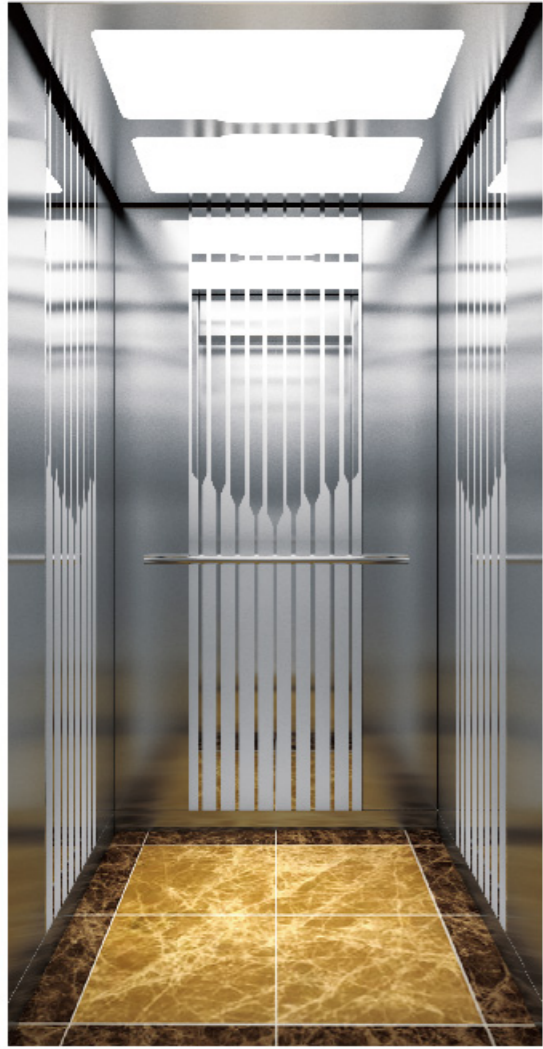


别墅电梯轿厢装潢

Villa elevator car decoration

传承经典，高贵血统

Noble and classical heritage



GES-J001

标配 Standard

吊顶：发纹不锈钢框架，亚克力透光板
轿壁：发纹蚀刻不锈钢，镜面蚀刻不锈钢
地板：大理石砖

Celling: Textured stainless steel frame, acrylic transparent
Car wall: Hairline stainless steel, mirror etched stainless steel
Floor: Marble tiles



GES-J006

无偿选配 Gratuitous optional

吊顶：发纹不锈钢，亚克力灯饰
轿壁：覆膜钢板，镜面蚀刻不锈钢
扶手：无
地板：大理石砖

Celling: Hairline stainless steel, acrylic lamp decoration
Car wall: Coated steel sheet, mirror etching stainless steel
Handrail: None
Floor: Marble tiles



GES-J007

选配 Optional

吊顶：顶 钛金镜面 中间 透光云石
轿壁：后壁 辅助板 镜面 中间板 皮革
侧壁 钛金镜面 皮革 金属条
扶手：无
地板：大理石砖

Celling: Top titanium mirror in the middle pervious to mica
Car wall: Rear wall auxiliary plate mirror intermediate plate leather
side wall titanium mirror leather metal strip
Handrail: None
Floor: Marble tiles



GES-J008

选配 Optional

吊顶：覆膜钢板配亚克力透光板，筒灯
轿壁：后壁，侧壁 木饰，自理挂画，爱马仕皮革
扶手：无
地板：大理石砖

Celling: Laminated steel plate with acrylic transparent plate downlight
Car wall: Rear wall auxiliary plate mirror intermediate plate leather side wall titanium mirror leather metal strip
Handrail: None
Floor: Marble tiles

操纵箱系列 (选配)

Operation panel (optional)

格尔森电梯的操纵箱，流线型的造型，新颖别致，极富现代感；按照人体工程学设计的显示器，操作方便自如。
 GERSON elevator control box, streamlined shape, chic, very modern; ergonomically designed display, easy to operate freely.



图片系电脑绘制，可能与实际图有不同。
 The pictures are plotted by computer and are likely somewhat different from the actual products.

一体式操纵箱

One-piece control box



图片系电脑绘制，可能与实际图有不同。
 The pictures are plotted by computer and are likely somewhat different from the actual products.

可选显示器
 Optional display



可选显示器
 Optional display
 7.0" TFT



可选显示器
 Optional display
 10.4" /12.1" TFT



可选按钮
 Optional button



触摸屏操纵屏
 Touch screen control panel



厅门

Landing door



GES-M02

发纹不锈钢、蚀刻
Texture stainless steel, etching

GES-M03

发纹不锈钢、蚀刻
Texture stainless steel, etching

GES-M04

发纹不锈钢、蚀刻
Texture stainless steel, etching

GES-M05

发纹不锈钢、镜面
Texture stainless steel, mirror



GES-M06

钛金、蚀刻
Titanium, etching

GES-M07

钛金、蚀刻、镜面
Titanium, etching, and mirrors

GES-M08

蚀刻、镜面、凹部金色
Etch, mirror, and concave gold

GES-M09

蚀刻、镜面、钛金
Etching, mirror, titanium

烤漆色标

Painting color code

色彩丰富，材质考究的轿壁任您自由选择。
car wall with rich colors and various materials can be chosen at your pleasure.



GES-S001

GES-S002

GES-S003

GES-S004

GES-S005

GES-S006

图片系电脑绘制，可能与实际图有不同。
The pictures are plotted by computer and are likely somewhat different from the actual products.

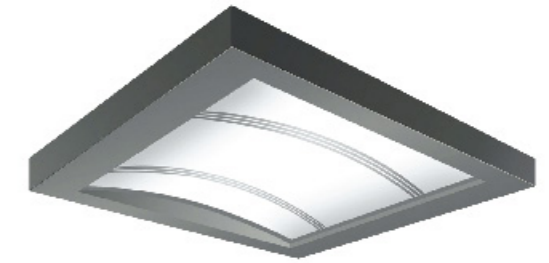
安全可靠 成就人生
A safe and reliable life



吊顶装潢 (选配) Ceiling decorating (optional)



GES-D02 标配 standard
钻石银喷涂钢板配亚克力透光板
Diamond silver painted steel with acrylic photic board



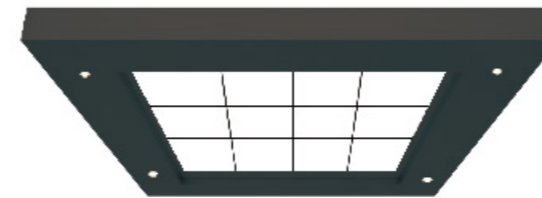
GES-D03 选配 optional
镜面不锈钢框架, 亚克力拱形顶板
Mirror stainless steel frame, acrylic arched top plate



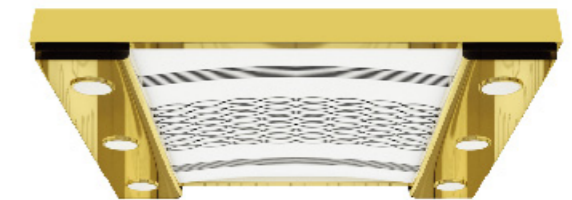
GES-D04 选配 optional
不锈钢镜面镂空板和白色透光板, 配铝合金框架
Hollow stainless steel mirror plate and white transparent panels, with all aluminum frame



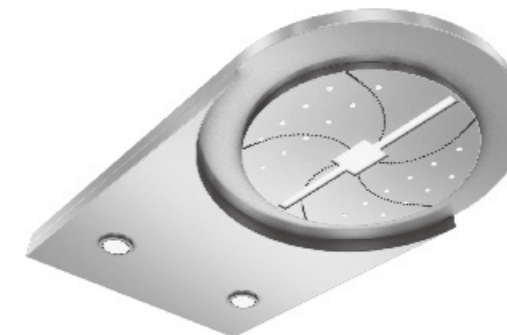
GES-D05 选配 optional
镜面不锈钢双层框架辅以乳白色透光组合
Mirror stainless steel double frame combined with milky translucent double combination



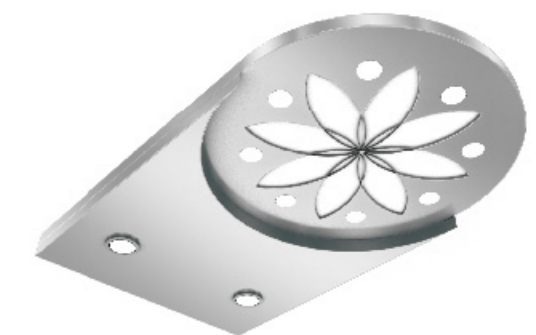
GES-D06 选配 optional
中部U型发纹板加LED灯, 两侧辅以镜面镂空板的柔光设计
U- hairline in the middle plate with LED lamp, the flexible lighting design on both sides



GES-D07 选配 optional
钛金镜面不锈钢, 亚克力灯饰
Titanium gold mirror stainless steel, acrylic lighting decoration



GES-D08 选配 optional
圆形工艺板造型及后部加LED灯的柔光照明设计
Circular board model and back with LED lamp for soft lighting illumination design



GES-D09 选配 optional
圆形荷花图案工艺板及后部加LED灯的柔光照明设计
Soft lighting design and technology board circular lotus pattern plus rear LED lights

扶手系列

Handrail series



GES-F001



GES-F003



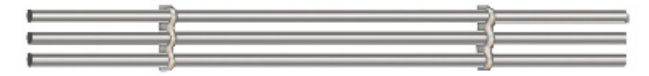
GES-F005



GES-F007



GES-F009



GES-F002



GES-F004



GES-F006

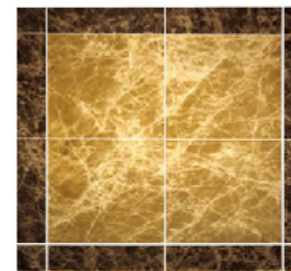


GES-F008



GES-F010

地板/Floor



GES-DB001



GES-DB002



GES-DB003



GES-DB004



GES-DB005



GES-DB006



GES-DB007



GES-DB008

乘客电梯功能表

Function Of Passenger Elevator

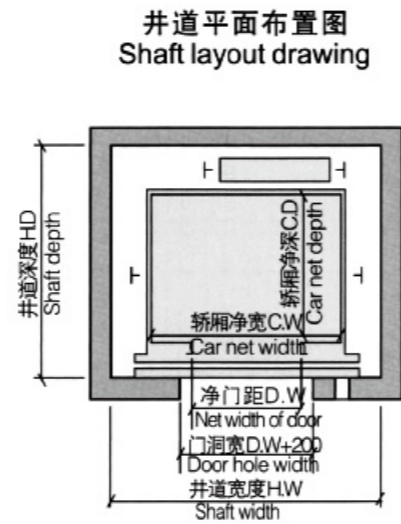
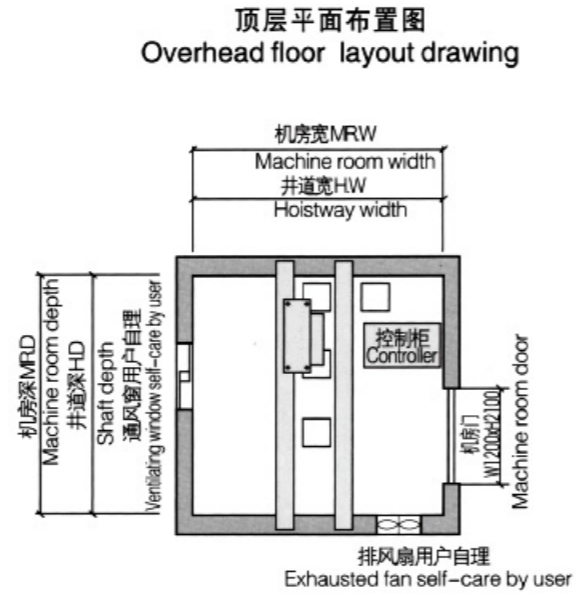
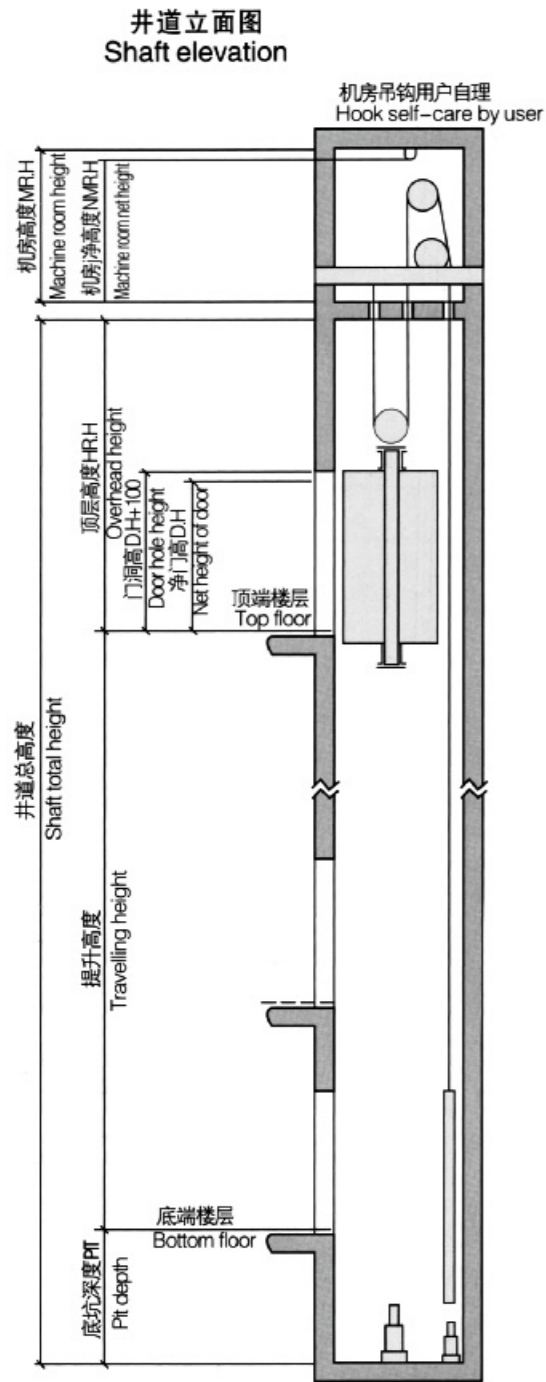
标准功能 / Standard Function

运行功能 Travel function	电梯变频驱动 VVVF drive	精确调整电动机转速, 令电梯启动、运行、停止时的速度曲线平稳、圆滑, 获得良好的舒适感。 Motor rotating speed can be precisely adjusted to get smooth speed curve in lift start, travel and stop and gain the sound comfort.
	门机变频驱动 VVVF door operator	精确调整电动机转速, 使门机的开启、关闭更轻柔灵敏。 Motor rotating speed can be precisely adjusted to get the more gentle and sensitive door machine start / stop.
	独立运行 Independent running	通过动作开关, 使电梯不响应外召, 仅响应轿内指令。 The lift can not respond to outer calling, but only respond to the command inside the car through the action switch.
	自动不停站通过 Automatic pass without stop	当轿内挤满乘客或负载接近预定值, 为保持最大运行效率, 该轿厢将自动越过召唤层站。 When the car is crowded with the passengers or the load is closeto preset value, the car will automatically pass the calling landing in order to keep maximum travel efficiency.
	开门时间自动调整 Automatically adjust door opening time	按照层站召唤或轿厢召唤的区别, 自动调整保持开门时间。 Door-open time can be automatically adjusted according to the difference between landing calling or car calling.
	本层重开门 Reopen with hall call	关门途中, 可以按本层站召唤按钮使门重新开启。 In the door shutting process, press reopen with hall call button can restart the door.
	即时关门 Express door closing	电梯停站开门到位时, 按下关门按钮, 门立即被关闭。 When the lift stops and opens the door, press door-shut button, the door will be closed immediately.
	停梯开门 Car stops and door open	电梯减速平层, 直到完全停稳后才开门。 The lift decelerates and levels, the door only opens after the lift comes to a complete stop.
	轿厢到站钟 Car arrival gong	装于轿顶的电子钟的钟声告知候梯的乘客电梯已到达。 Arrival gong in the car top announces that the passengers arrive.
	直接停靠 Direct parking	完全根据距离原则, 平层无爬行, 大大提高了运行效率。 It completely accords with distance principle with no crawling in the leveling. It greatly enhances the travel efficiency.
安全功能 Safety function	多射线门传感器 Multi-ray door sensor	射线被遮挡时, 关门动作立即停止且自动开门。 When rays is steltered, door will stop closing at once immediately and automatically open.
	指定停靠 Designated stop	由于某种原因, 电梯在目的层无法开门, 电梯将关门运行至下一指定层楼。 If the lift can not open the door in the destination floor out of some reason, the lift will close the door and travel to the next designated floor.
	超载停梯 Overload holding stop	轿厢超载时, 鸣响蜂鸣器并停止于该层站。 When the car is overload, the buzzer rings and stops the lift in the same floor.
	防止失速内部计数器保护 Anti-stall timer protection	由于曳引钢丝绳打滑而无法正常运行时, 电梯停止运行。 The lift stops operation due to slippery traction wire rope.
	启动保护控制 Start protection control	电梯启动后在指定的时间内, 没有离开门区, 电梯停止运行。 If the lift does not leave door zone within the designated time after it gets started, it will stop the operation.
	检修操作 Inspection operation	当进入检修状态时, 轿厢以低速点动运行。 When the lift enters into inspection operation, the car travels at inching running.
	故障自诊断 Fault self-diagnosis	控制器可记录最新的62个故障, 以便快速排除故障, 迅速恢复电梯运行。 The controller can record 62 latest troubles so as to quickly remove the trouble and restore the lift operation.
	电梯门重复开关 Repeated door closing	有时因阻碍或干扰, 电梯门未能关闭, 电梯门会重复打开或关闭, 直到杂物被清除。 If the lift can not close the door due to certain obstacle or interference, the lift will reopen or re-shut the door until sundries are eliminated.
	上下越层及上下极限保护装置 Up/down over-run and final limit protection	该装置可有效地防止当电梯万一发生失控时的冲顶或撞底现象, 使电梯更安全可靠。 The device can effectively prevent from the lift's surging to the top or knocking the bottom when it is out of the control. It results in the more safe and reliable lift travel.
	下行超速保护装置 Down over-speed protection device	当电梯下降运行的速度超过额定速度的1.2倍时, 该装置自动切断控制电源, 使电机停止运转以阻止电梯超速下行; 如电梯继续超速下行, 其速度超过额定速度的1.4倍时, 安全钳动作, 强制电梯停止运行, 保证安全。 When the lift downs 1.2 times higher than the rated speed, this device will automatically cut off control mains, stop the motor running so as to stop lift down at over-speed. If the lift continues to down at over-speed, and the speed is 1.4 times higher than rated speed, safety tongs act to force the lift stop in order to ensure the safety.
上行超速保护装置 Upward over-speed protection device	当电梯上行的速度超过额定速度的1.2倍时, 该装置自动将电梯减速或制停。 When the lift ups 1.2 times higher than rated speed, the device will automatically decelerate or brake the lift.	
人机界面 Man-machine interface	轿内及层站微动指令按钮 Micro-touch button for car call and hall call	轿内操纵箱指令按钮及层站召唤按钮采用新型微动型按钮。 Novel micro-touch button is used for operation panel command button in the car and landing calling button.
	轿内层楼、方向指示 Floor and direction indicator inside car	轿内显示电梯所在层楼及当前运行方向。 The car shows the lift floor location and current travel direction.
	层站层楼、方向指示 Floor and direction indicator	层站显示电梯所在层楼及当前运行方向。 The landing shows the lift floor location and current travel direction.

应急功能 Emergency function	应急照明 Emergency car lighting	停电时, 自动打开轿内应急照明。 Emergency car lighting automatically activated once power failure.
	点动运行 Inching running	当进入紧急电动状态时, 轿厢以低速点动运行。 When the lift enters into emergency electric operation, the car travels at low speed inching running.
	五方通话装置 Five way intercom	通过对讲机, 可让轿内、轿顶、电梯机房、井道底坑、救援值班室之间通话。 Communication amid car, car top, lift machine room, well pit and rescue duty room through walkie-talkie.
	警铃 Bell	紧急时, 连续按下轿内操纵箱上的警铃按钮, 安装于轿厢顶上的电铃会鸣响。 In emergency conditions, if bell button above car operation panel is continuously pressed, electric bell rings on top of the car.
节能功能 Energy-saving function	消防返回 Fire emergency return	启动基站或监控屏上的钥匙开关, 所有召唤均被取消, 电梯立即驶往指定救援层站停靠, 并自动开门。 If you start key switch in main landing or monitor screen, all the callings will be cancelled. The lift directly and immediately drives to the designated rescue landing and automatically opens the door.
	轿厢风扇/照明自动开关 Car ventilation, light automatic shut off	在规定的时间内没有召唤或指令信号, 轿厢内的风扇和照明会自动关闭, 以节能。 If there is no calling or command signal within the stipulated time, the car fan and lighting will be automatically closed in order to save the energy.
应急功能 Emergency function	远程关闭 Remote shut-off	通过钥匙开关, 电梯可以被召唤到基站 (服务完成后), 并自动退出服务。 The lift can be called to main landing (after finishing the service) through the key switch and automatically exists the service.
	停电应急平层 Leveling when power failure	正常电源断电时, 充电式电池提供电梯电源, 电梯驶往最近层站。 In normal power failure, the chargeable battery supplies the lift power. The lift drives to the nearest landing.
运行功能 Travel function	防捣乱 Anti-nuisance	当电梯轻载时出现超过三个指令时, 为避免不必要停靠, 轿厢内已登记的召唤将全部自动消除。 In the light lift load, when three more commands appear, in order to avoid the unnecessary parking, all the registered callings in the car will be cancelled.
	提前开门 Open the door in advance	电梯减速进入开门区域, 自动开门, 提高运行效率。 When the lift decelerates and enters into door open zone, it automatically opens the door to enhance the travel efficiency.
	指令登记删除 command register cancel	如按错了轿内楼层指令按钮, 只要把同一按钮连接两次, 就可取消已登记指令。 If you press the wrong floor command button in the car, twice continuous pressing of the same button can cancel the registered command.
	并联功能 Duplex control	用于两台同型号电梯, 通过电脑的调度来统一响应召唤信号, 以最大限度地减小乘客的候梯时间, 以提高运行效率。 Two sets of same model lifts can unanimously respond the calling signal through the computer dispatch. In this way, it reduces the passengers' waiting time to the greatest extent and enhances the travel efficiency as well.
	电梯轿厢意外移动 保护功能 Accidental mobile protection function of elevator car	当电梯处于平层位置且门打开时, 如果电梯出现意外移动, UCMP安全装置马上启动保护, 停止电梯运行, 为乘客增加了一道安全保障。 When the elevator is in the leveling position and the door opens, if accidental move takes place to the elevator, UCMP safety device immediately starts the protection. It stops the elevator running, adds a safety warranty for the passengers.
人机界面 Man-machine interface	语音报站 Voice announcer	在正常运行到站的情况下, 利用语音装置告知乘客有关信息。 When the lift normally arrives, voice announcer informs the passengers about the relevant information
	轿厢副操纵箱 Car assistant operation box	用于大载重量电梯或候梯人群稠密大楼中的电梯, 以便让轿厢内更多的乘客方便使用。 It is used in the large loading weight lifts or the lifts with crowded passengers so that more and more passengers can use the car.
	残疾人操纵箱 Operation box for the handicapped	便于让轿厢内坐轮椅的乘客及视觉障碍的乘客方便使用。 It is convenient for the wheelchair passengers and those who have vision problems.
	智能召唤服务 Intelligent calling service	通过专用的智能输入设备, 可使轿厢指令或厅外召唤锁定或接通。 The car command or hoist-way calling can be locked or connected through special Intelligent Input.
监控功能 Monitor function	远程监控 Remote monitor	通过调制解调器和电话, 可实现电梯的远程监视和控制, 便于厂家和服务单位及时的了解每台电梯的运行状况, 以便及时作出相应措施。 The lift long-distance monitor and control can be fulfilled through modem and telephone. It is convenient for the factories and service units to timely know the travel conditions of every lift and promptly take the corresponding measures.
	轿内摄像功能 Camera function in the car	摄像头装于轿厢内监视轿内情况。 The camera is installed in the car to monitor the car conditions.

Shaft layout

小机房乘客电梯土建示意图



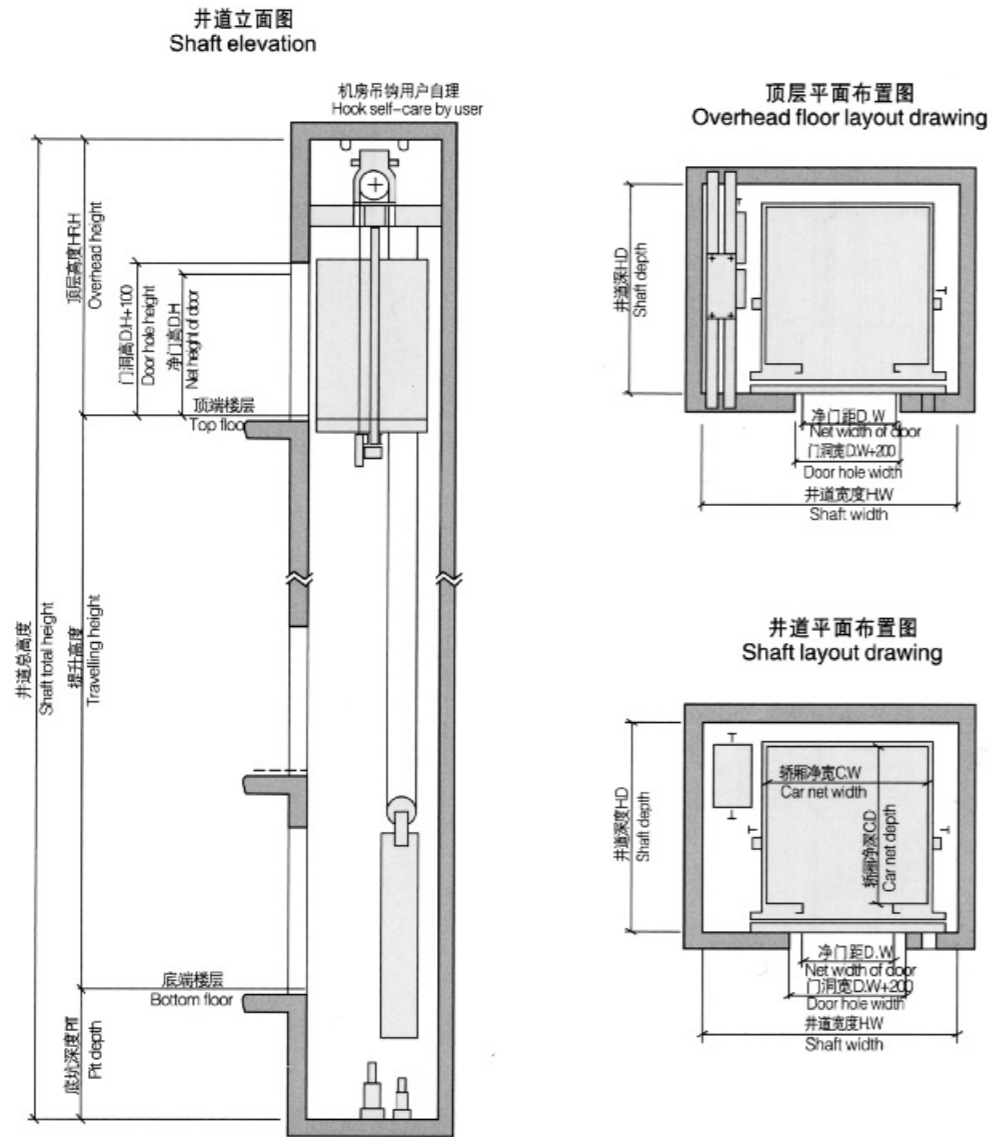
小机房乘客电梯参数表
Small machine room passenger elevator specifications

载重 load Kg	速度 m/s	轿厢净尺寸 mm Net size of car CW x CD x CH	开门尺寸mm Door opening size DW x DH	井道尺寸 mm Shaft size			最高层站 Maximum landing	高度 m Maximum lifting height	机房高 MRH Net height of machine room
630	1.0	1400x1100x2500	800x2100	1850x1750	4250	1400	20	60	2500
	1.5				4350	1450	24	72	
	1.75				4400	1500	30	90	
800	1.0	1400x1350x2500	900x2100	1960x2000	4300	1400	20	60	2500
	1.5				4400	1450	24	72	
	1.75				4450	1500	30	90	
	2.0				4900	1750	40	120	
	2.5				5100	1950	40	130	
1000	1.0	1600x1400x2500	900x2100	2050x2050	4300	1400	20	60	2500
	1.5				4400	1450	24	72	
	1.75				4450	1500	30	90	
	2.0			4900	1750	40	120		
	2.5			5100	1950	40	130		
	3.5			2300x2200	5600	3400	60	180	
1150	1.0	2000x1350x2500	1100x2100	2500x2150	4550	1550	20	60	2500
	1.5				4700	1600	24	72	
	1.75				4750	1650	30	90	
	2.0				4900	1750	40	120	
	2.5				5100	1950	40	130	
	3.5				2700x2150	5600	3400	60	
1350	1.0	2000x1500x2500	1100x2100	2500x2200	4550	1550	20	60	2500
	1.5				4700	1600	24	72	
	1.75				4750	1650	30	90	
	2.0				4900	1750	40	120	
	2.5				5100	1950	40	130	
	3.5				2700x2400	5600	3400	60	
1600	1.0	2000x1700x2500	1100x2100	2500x2400	4550	1600	20	60	2500
	1.5				4700	1700	24	72	
	1.75				4750	1750	30	90	
	2.0				4900	1800	40	120	
	2.5				5100	1950	40	130	
	3.5				2700x2600	5600	3400	60	

注：上述尺寸供设计参考，具体尺寸以合同签约时提供的土建图为准。
Note: Only for reference, final manufacture please follow contract.

Shaft layout

无机房乘客电梯土建示意图



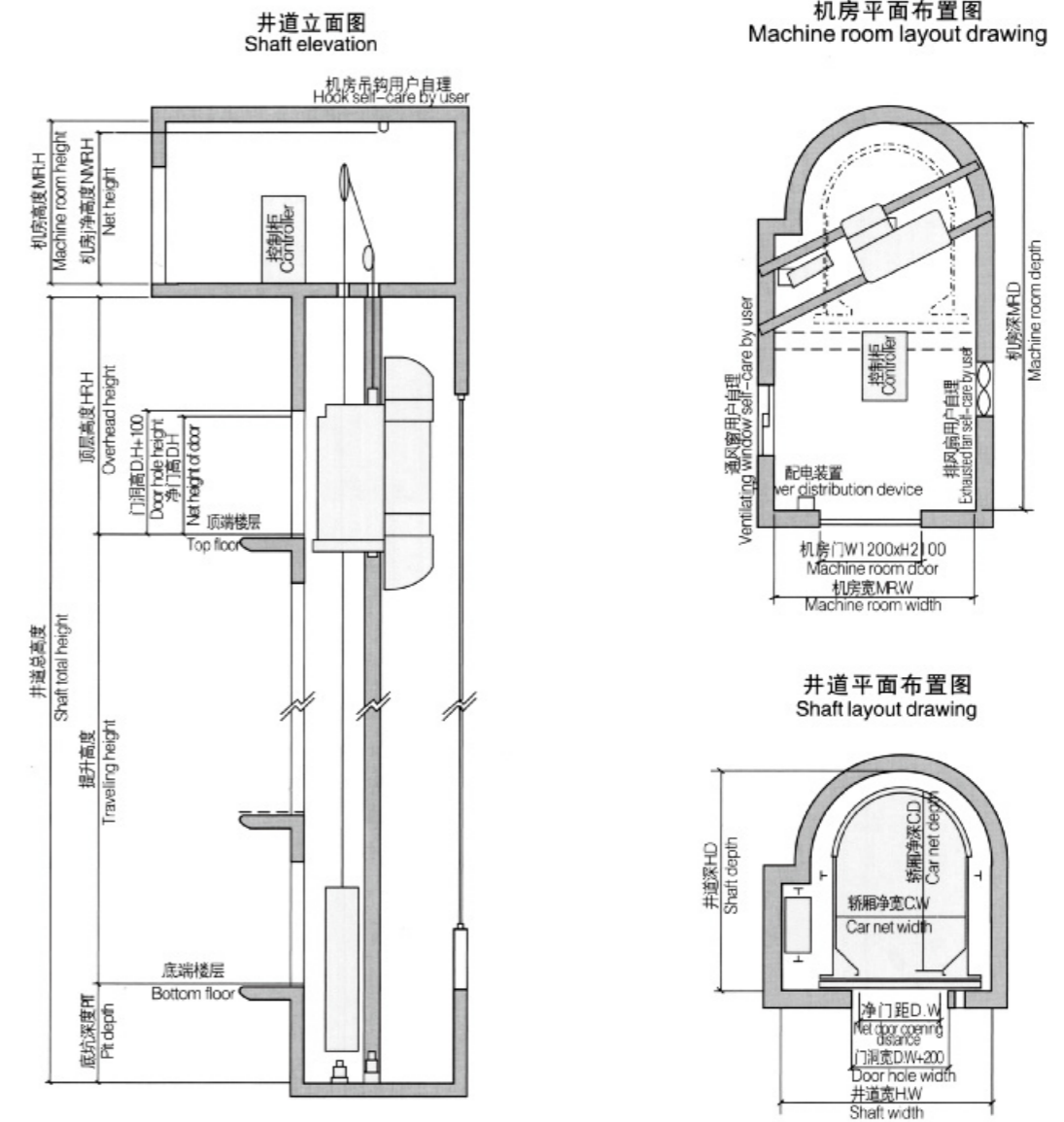
无机房电梯参数表 Machine roomless elevator specifications

载重 load Kg	速度 m/s	轿厢净尺寸mm Net size of car CW x CD x CH	开门尺寸mm Door opening size DW x DH	井道尺寸 mm Shaft size			最高层站 Maximum landing	最大提升高度 m Maximum lifting height
				HW x HD	HRH	PIT		
630	1.0	1100x1400x2500	700x2100	1900x1800	4250	1600	20	60
	1.5				4400	1700	24	72
	1.75				4500	1700	30	90
800	1.0	1350x1400x2500	900x2100	2250x1800	4250	1600	20	60
	1.5				4400	1700	24	72
	1.75				4500	1700	30	90
1000	1.0	1600x1400x2500	900x2100	2400x1800	4250	1600	20	60
	1.5				4400	1700	24	72
	1.75				4500	1700	30	90
1350 (宽轿厢)	1.0	2000x1500x2500	1100x2100 中分	2850x2000	4550	1600	20	60
	1.5				4600	1700	24	72
	1.75				4700	1700	30	90
1350 (深轿厢)	1.0	1300x2300x2500	1100x2100 旁开	2150x2800	4550	1600	20	60
	1.5				4600	1700	24	72
	1.75				4700	1700	30	90
1600 (宽轿厢)	1.0	2000x1700x2500	1100x2100 中分	2850x2100	4550	1600	20	60
	1.5				4600	1700	24	72
	1.75				4700	1700	30	90
1600 (深轿厢)	1.0	1400x2400x2500	2100x2100 旁开	2250x2900	4550	1600	20	60
	1.5				4600	1700	24	72
	1.75				4700	1700	30	90

注：上述尺寸供设计参考，具体尺寸以合同签约时提供的土建图为准。
Note: Only for reference, final manufacture please follow contract.

Shaft layout

观光（半圆）电梯土建示意图



注：本示意图以半圆形观光电梯为例。
Note: the conceptual diagram takes the semi-circular observation elevator as an example.

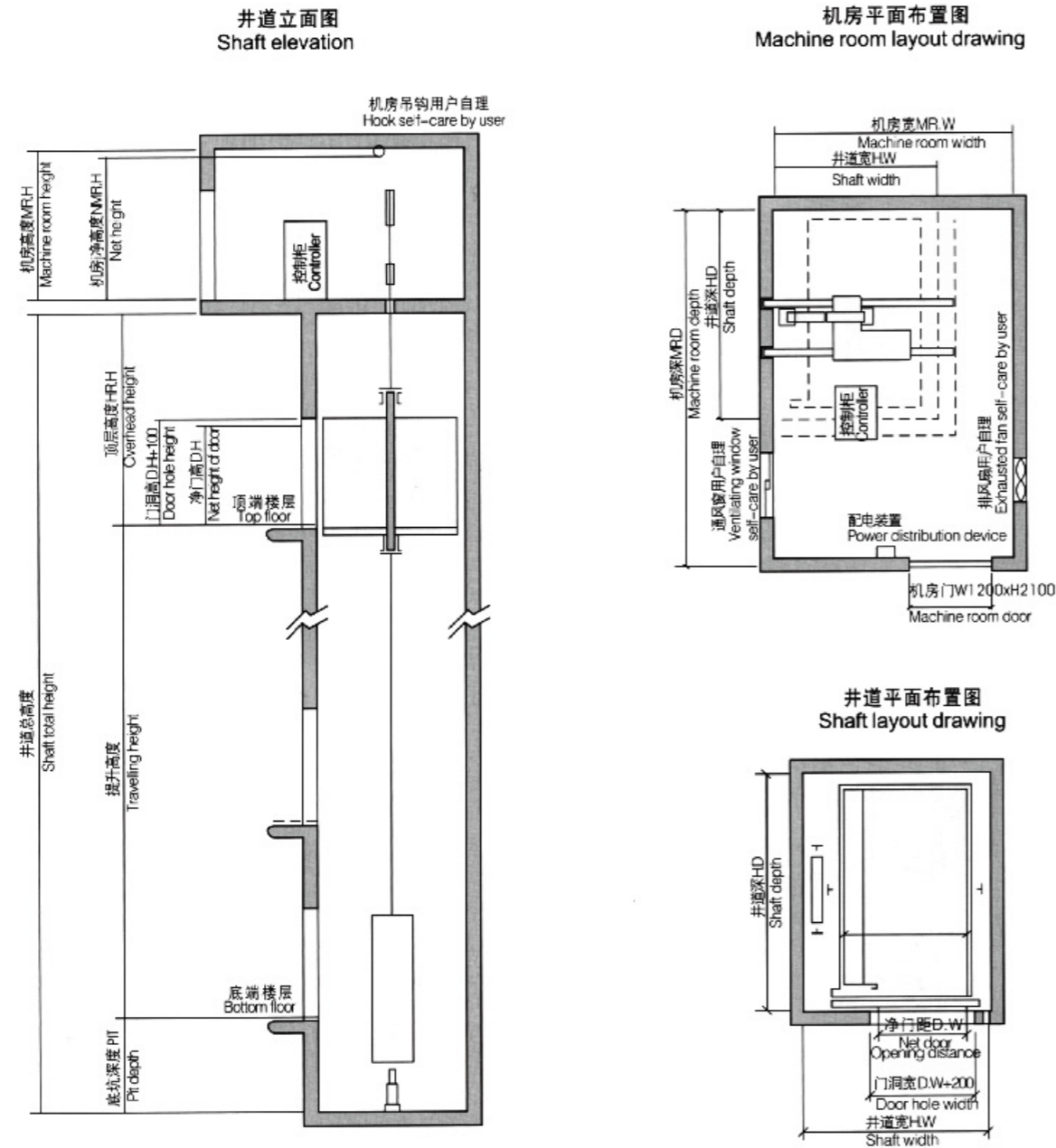
观光电梯参数表 Observation elevator specifications

载重 load Kg	速度 m/s	轿厢净尺寸 mm Net size of car CW x CD x CH	开门尺寸 mm Door opening size DW x DH	井道尺寸 mm Shaft size			最高层站 Maximum landing	最大提升 高度 m Maximum lifting height	机房净宽 MRW Net width of machine room	机房净深 MRD Net depth of machine room	机房净高（吊 钩以下）MRW Net height of machine room
				HW x HD	HRH	PIT					
800	1.0	1250x1650x2500	900x2100	2400x2100	4400	1950	15	50	2400	3400	2500
	1.5				4550	2000	24	80			
	1.75				4600	2050	32	95			
1000	1.0	1350x1850x2500	900x2100	2500x2350	4400	1950	15	50	2500	3700	2500
	1.5				4550	2000	24	80			
	1.75				4600	2050	32	95			
1150	1.0	1400x1950x2500	900x2100	2550x2450	4400	1950	15	50	2550	3700	2500
	1.5				4550	2000	24	80			
	1.75				4600	2050	32	95			
1350	1.0	1600x1950x2500	1000x2100	2700x2450	4400	1950	15	50	2750	3700	2500
	1.5				4550	2000	24	80			
	1.75				4600	2050	32	95			
1600	1.0	1600x2250x2500	1000x2100	2700x2750	4400	1950	15	50	2750	4000	2500
	1.5				4550	2000	24	80			
	1.75				4600	2050	32	95			

注：上述尺寸供设计参考，具体尺寸以合同签约时提供的土建图为准。
Note: Only for reference, final manufacture please follow contract.

Shaft layout

医用电梯土建示意图



注：图示为旁开两扇门医用电梯，其他规格医用电梯请详见土建图。
Note: The diagram shows two-panel sliding door hospital elevator, please refer to the construction layout drawing for other detailed specifications of the hospital elevators.

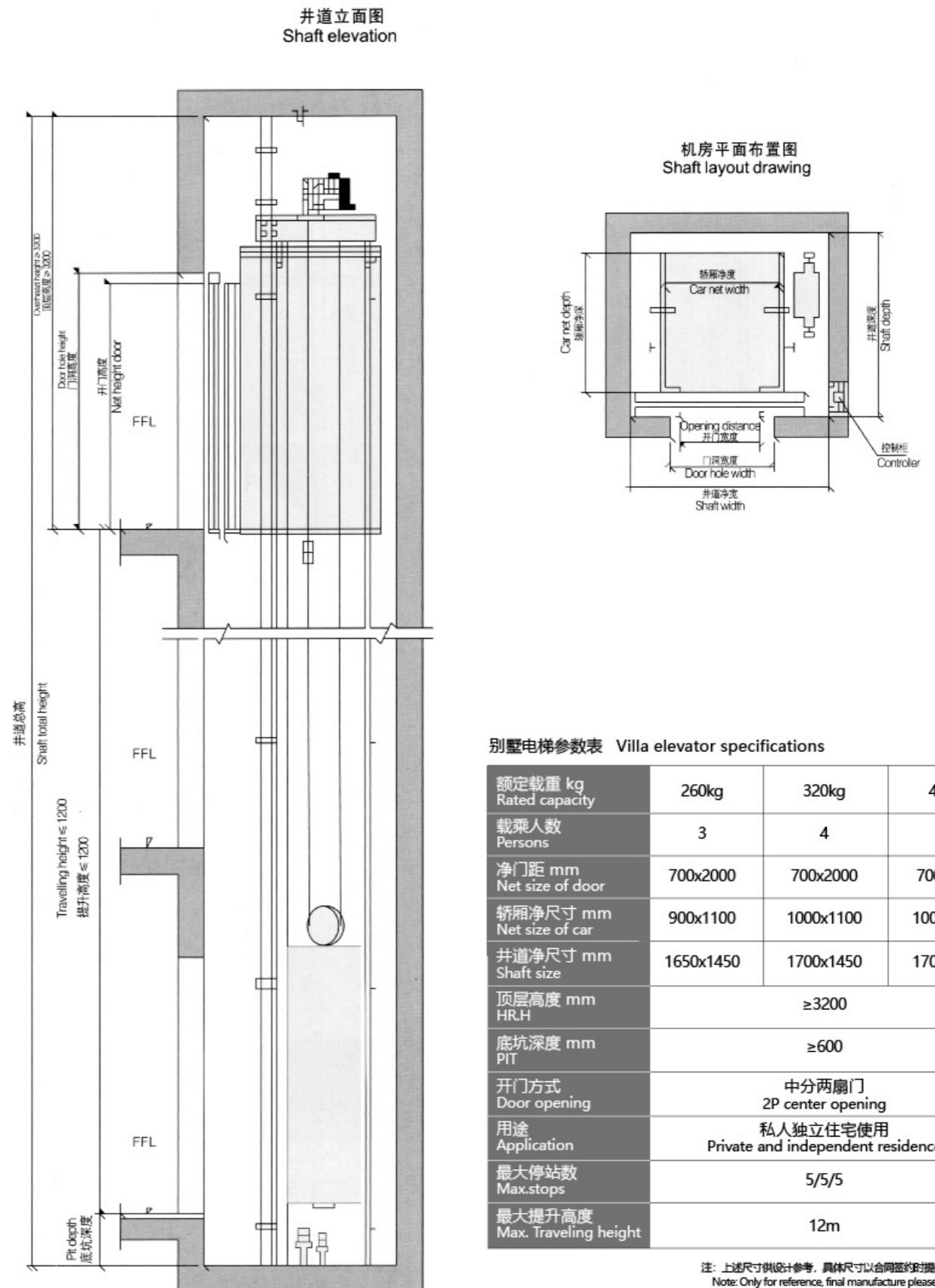
医用电梯参数表 Hospital elevator specifications

载重 load Kg	速度 m/s Speed	轿厢净尺寸mm Net size of car CW x CD x CH	开门尺寸mm Door opening size DW x DH	井道尺寸 mm Shaft size			最高层站 Maximum landing	最大提升高度 m Maximum lifting height	机房净宽 MRW Net width of machine room	机房净深 MRD Net depth of machine room	机房净高 (吊 钩以下) MRW Net height of machine room
				HW x HD	HRH	PIT					
1600	1.0	1400x2400x2500	1000x2100 中分	2400x2850	4500	1550	15	50	2400	2850	2500
	1.5				4600	1600	24	80			
	1.75				4650	1650	32	95			
	2.0				4800	1800	32	95			
1600	1.0	1400x2400x2500	1200x2100 旁开	2300x2850	4450	1550	15	50	2300	2850	2500
	1.5				4600	1600	24	80			
	1.75				4650	1650	32	95			
	2.0				4800	1800	32	95			

注：上述尺寸供设计参考，具体尺寸以合同签订的土建图为准。
Note: Only for reference, final manufacture please follow contract.

Shaft layout

别墅电梯土建示意图



别墅电梯参数表 Villa elevator specifications

额定载重 kg Rated capacity	260kg	320kg	400kg
载乘人数 Persons	3	4	5
净门距 mm Net size of door	700x2000	700x2000	700x2000
轿厢净尺寸 mm Net size of car	900x1100	1000x1100	1000x1200
井道净尺寸 mm Shaft size	1650x1450	1700x1450	1700x1550
顶层高度 mm HR.H	≥3200		
底坑深度 mm PIT	≥600		
开门方式 Door opening	中分两扇门 2P center opening		
用途 Application	私人独立住宅使用 Private and independent residence		
最大停站数 Max.stops	5/5/5		
最大提升高度 Max. Traveling height	12m		

注：上述尺寸供设计参考，具体尺寸以合同签订的土建图为准。
Note: Only for reference, final manufacture please follow contract.

物联网介绍

Introduction to the Internet of things



物联网技术为服务加速度

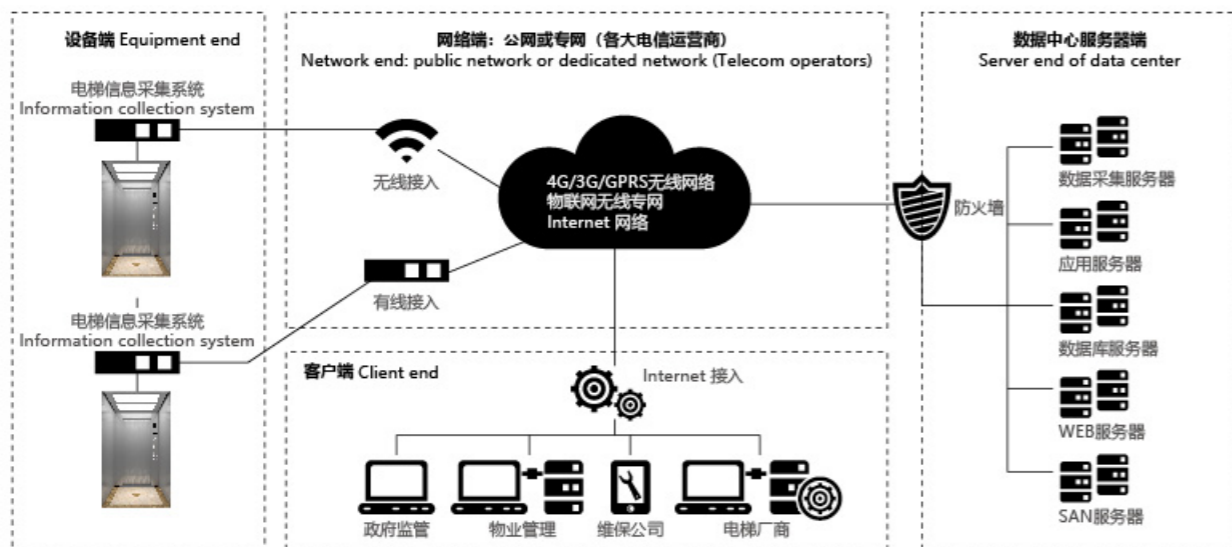
Internet of Things speeds up the excellent services

我们坚信一件产品达到完美水准,其卓越的品质不是全部,只有再加上高标准的服务保障,才能真正为客户创造最大价值,客户才能真正获得该产品带来的超值享受。

以“无处不在的服务,全心全意为客户”的服务理念,格尔森员工提供一年365天,每天24小时的售后服务保障。

We are firmly convinced that the perfect condition of every product shall include high standard service warranty. So it can truly create maximum value for broad customers. And the clients can truly enjoy value-exceeding experience from the products.

Our service ideas: We wholeheartedly serve vast clients from everywhere. GERSON employees offer 365 days a year, 24 hours a day after sale service warranty.



全程服务,让心与心更靠近

Full-cours dervice, heart-to-toheart connection

服务不仅仅是要保证安全,保障您设备方面的投资,真正的服务是预见和满足顾客特别的需求。正因为服务的定义随着顾客需求的不同而不同,我们满足这些需求的方法也是广泛而且个性化的。

Service ont only to ensure safety,protect your investment in equipment,the real service is to anticipate and meet the spacial needs of customers.because the denifition of services with different customer needs and different ways to meet those needs we also extensive and personalized.

维护保养解决方案 Maintenance

通过专业、全面的“预防为主,预检预修”的计划性电梯保养服务,保证电梯安全高效地运行,为客户的资产保值增值。

Professional and full scheduled elevator maintenance service centering" prevention frist ,servicing first" guarantees running in safe and nign-efficiency way,and can keep value of and appreciate customer's property.



修理/升级解决方案 Repair/ upgrade

经年累月的运转使电梯部件出现磨损,外观和功能也逐渐过时。格尔森修理/升级解决方案基于电梯现有配置,针对客户需求增设附属硬件或进行系统改良,提高电梯设备的安全性、可靠性、运行效率和舒适度,始终满足乘客期望。

Elevator component may be worn, and appearance and function may gradually get out-of-date upon years of running. Based on current elevator configuration, in GERSON repair/upgrade solution, auxiliary hardware is added or system is improved as customer demand to improve safety, reliability, running efficiency and comfort and always meat passenger's expectation.



现代化更新解决方案 Modernization update

以最先进的现代电气控制系统取代老化过时的系统,同时保留有价值的机械部件。不需要新梯的费用,也不影响楼宇的正常运营,却呈现给您一部崭新电梯的价值。

Out-of-date system is replaced with the most advanced modern electrical control system, meanwhile valuable key mechanical components are reserved. On the basis, value of brand-new elevator is brought without cost of new elevator or impact on normal operation of building.

